



Fabweld Steel Products Ltd
Value and service for our customers through our people

FAB GRAB S20 – Highway's Specification Installation Guide

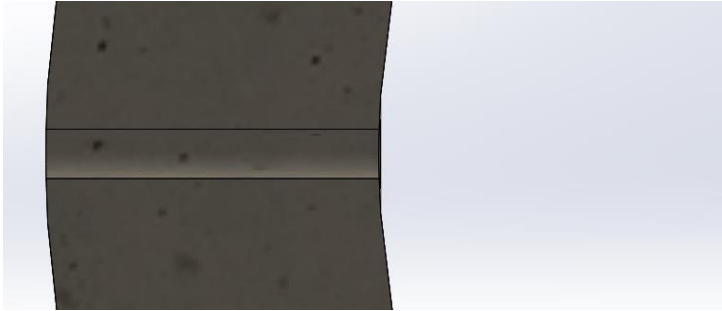


Figure 1

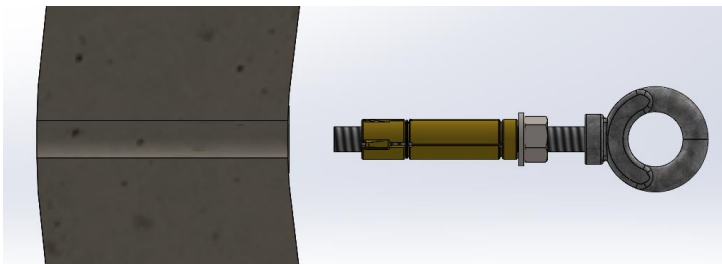


Figure 2

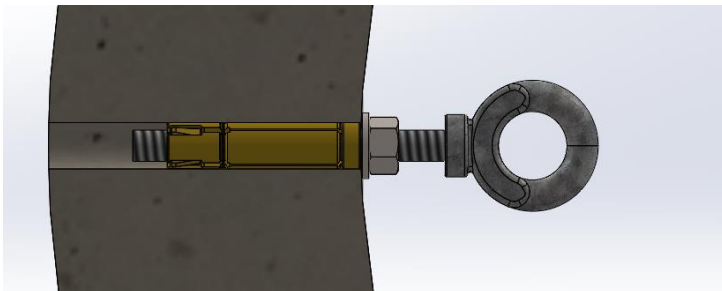


Figure 3

1. Using a 16mm masonry drill bit, drill fixing holes opposite each other to a minimum depth of 80mm in position displayed in fig 4
2. Remove debris from fixing holes. Fully insert shield anchor with chain remaining attached (opposite end to pigtailed link). Detach pigtailed link from eye bolt on the opposite end of the chain fixing set and fully insert the anchor into the fixing hole.
3. Tighten nuts to a suitable level of torque with approximately 15mm of exposed thread past the nut on each side. Re-connect pigtailed link to eye on the one side. Adjust eye bolt (and tighten nut) if required to meet the dimension shown below in Figure 4.

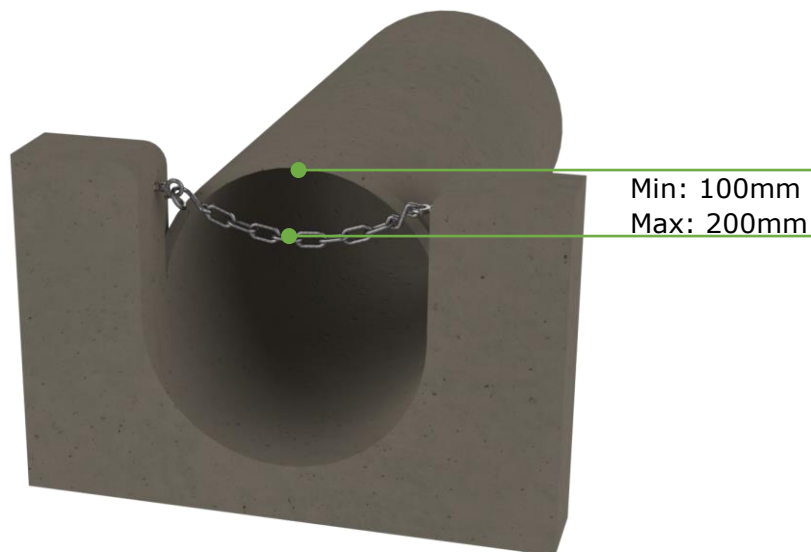


Figure 4

For more information contact our sales team on **01952 581430** or **sales@fsp.co.uk**



Units D11-D13 Court 2000, Bridgnorth Road,
Madeley, Telford, Shropshire TF74JB
Tel: 01952 581430 Fax: 01952 586141
Web: www.fsp.co.uk Email: sales@fsp.co.uk
VAT Number GB 594212341 | Registered Number 3675964

